



Vortex HDV PAPR System

—
The next level of welding
respiratory protection.





VORTEX HDV PAPR SYSTEM

All in one solution for
welding protection
and performance.





Increases wearability.
Maximises cooling and comfort.
Enhances visibility.

Designed for professional welders, Miller's Vortex HDV PAPR System provides protection against weld fumes for the most demanding applications. Lightweight, it increases wearability and features 6 air distribution points and 3 cooling speeds to keep you cooler on the job.

Plus, with Miller's exclusive HDV Lens Technology and ClearLight™ Lens Technology, you'll get a sharper, clearer, more detailed view with minimal distortion so that you can see more every time you weld.

ULTRA HDV HELMET

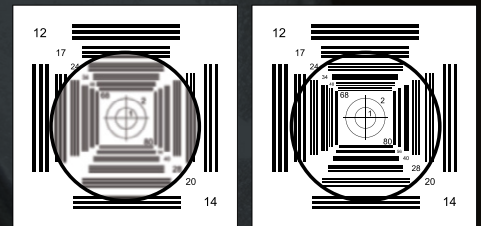
Get a sharp, more detailed view
at any angle with minimal distortion.

Specifications

PART NUMBER	305000
APPLICATIONS	Stick, MIG, TIG and Plasma Cutting
VIEWING AREA	97 x 60mm
CARTRIDGE SIZE	114 x 120 x 9.5mm
MODES	X-Mode, Weld, Cut, Grind
X-MODE	Shade 8 - 12.5
GRIND MODE	Shade 2.5
CUT	Shades 5 - 8
WELD	Shades 8 - 12.5
SWITCHING SPEED (LIGHT TO DARK)	1/25,000 sec
DELAY SPEED (DARK TO LIGHT)	0.1 - 1.0 sec
ARC SENSORS	4
OPTICAL GRADE	EN379 1/1/1/2
WEIGHT	709g
POWER	CR2450 lithium battery and solar-assist
ON/OFF CONTROL	Automatic on, off after 45 minutes
OPERATING TEMPERATURE	-10 to 55°C
WARRANTY	3 years (Auto-Darkening lens only)
STANDARDS	AS/NZS 1338.1 (Auto-Darkening) AS/NZS 1337.1 B (High Impact)

Exclusive Miller HDV Lens Technology

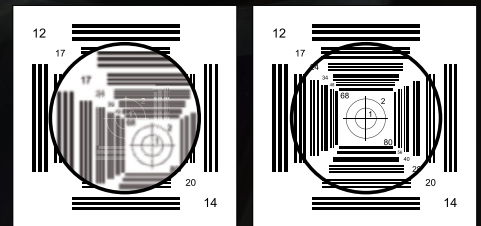
RESOLUTION



Conventional
Product

HDV

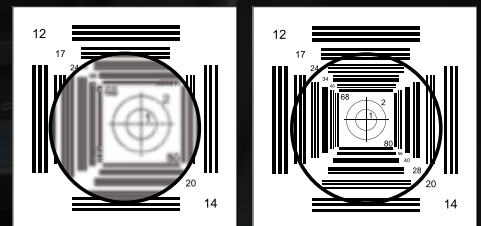
PARALLELISATION



Conventional
Product

HDV

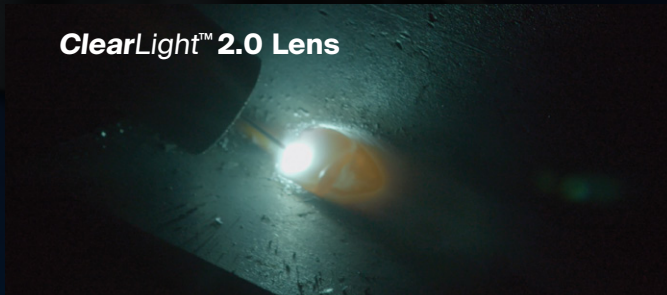
REFRACTION



Conventional
Product

HDV

ClearLight™ 2.0 Lens



Traditional Lens



LARGE INTEGRATED GRIND SHIELD

The 174mm x 126mm viewing area provides a clear view for grinding and other tasks, increasing helmet-on-time, decreasing the potential for eye injuries.

EXCLUSIVE MILLER HDV LENS TECHNOLOGY

Provides a sharp detailed view of the weld pool with minimal distortion.

EXCLUSIVE MILLER ClearLight™ 2.0 LENS TECHNOLOGY

Advanced high-definition optics for the most realistic view that's clearer and brighter.

EXCLUSIVE MILLER INFOTRACK™ 2.0 TECHNOLOGY

Provides memory, arc time and arc count functions that allows the weld operator to store favourite settings. Keeps track of weld time and arc starts.

EXCLUSIVE MILLER X-MODE™ TECHNOLOGY

Allows the lens to darken only when you start to weld. Ideal for outdoor, low amp TIG and obstructed applications.

GEN 4 HEADGEAR

Features an oversized back cushion and multiple head straps for a secure fit, eliminating over tightening and discomfort

HALF SHADE SETTINGS

Provides precise lens adjustment for optimised comfort and vision.

ALUMINIUM HEAT SHIELD

Reflects heat, keeping the lens and operator cool.

2.5 LIGHT STATE

Allows operators to keep their hood down between welds, improving safety and productivity.





LCD DISPLAY

Allows users to see fan speed, filter time, battery level and current time.

FILTER TIMER

Tracks how many hours of use the filter has.

AUDIBLE AND VIBRATING ALARM

Notifies users in noisy environments of low battery due to reduced airflow.

THREE AIR SPEEDS - LOW, MEDIUM AND HIGH

Allows users to adjust the volume of air to maximise comfort in varied work conditions.

2x LIGHTWEIGHT LITHIUM-ION BATTERY

One for usage and one for charging. Provides long battery life (up to ten hours on low speed) with no memory retention from frequent charging (three-four charge cycle).

PATENT-PENDING DUALTEC™ MANIFOLD SYSTEM

Optimises helmet balance and sound, while 6-point air distribution system maximises cooling through targeted air placement.

INTEGRATED 3-POINT BACK-PACK STYLE SHOULDER STRAPS

Enhances comfort, reduces fatigue over long shifts by distributing system weight to alleviate back pain.

QUICK-RELEASE BELT DESIGN

Allows for seamless system on/off.

LIGHTWEIGHT LOW-PROFILE BLOWER DESIGN (1362gm)

Extends wear-ability without interfering with surroundings.

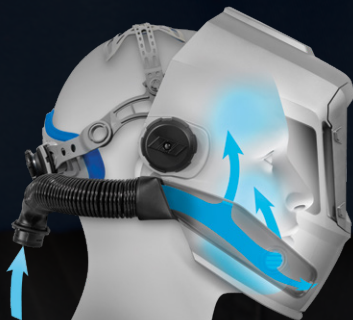
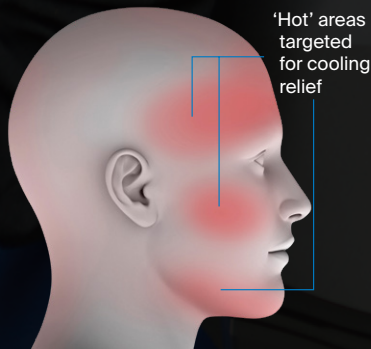


VORTEX HDV PAPR SYSTEM

The next level of welding
respiratory protection.

Specifications

PART NUMBER	305001
SIZE (BLOWER ASSEMBLY)	210 x 178 x 76mm
WEIGHT (BLOWER ASSEMBLY, FILTERS, BELT, SHOULDER STRAPS, AND BATTERY)	1362gm
AIR FILTER ASSEMBLY	Spark guard screen, foam prefilter, and particulate (HEPA) filter - down to 0.3 micrometers in size
AIR FLOW	Low speed: 6.18+ CFM (175+ LPM) Medium speed: 6.89 CFM (195 LPM) High speed: 7.59 CFM (215 LPM)
OPERATING TEMPERATURE	-5 to 55°C
STORAGE TEMPERATURE	-10 to 80°C
BATTERY TYPE	Rechargeable lithium 14.8V, 3A
BATTERY CHARGING TIME	About 3 hours
BATTERY LIFE	500 charges - Run time dependent on air flow rate and filter load
BELT SIZE	711 to 1397mm
WARRANTY	1 Year Warranty (blower unit)
STANDARDS	AS/NZS 1716:2012
PROTECTION LEVEL	Class 2 particulate filter meets AS/NZ1716:2012 standards



Complete System Includes

- Blower assembly Gen2
- HEPA filter
- Prefilter
- Spark guard
- Prefilters (x6)
- Breathing tube
- Breathing tube cover
- Padded belt
- Shoulder straps
- Lithium-ion batteries (x2)
- Battery charger
- Battery charger supply cable with AU plug
- PAPR owner manual
- Flowmeter
- Carry bag
- Ultra HDV helmet assembly
- Spare HDV front cover lens (x2)
- Spare HDV grind shield (x2)
- Spare cover lens inside (x2)
- Helmet owner manual
- Tear away grind shield (x2)

*Welding Industries of Australia will not accept responsibility for respiratory protective equipment that is chosen incorrectly. Some welding environments may contain dangerous levels of poisonous gases that are not suitably filtered by a particle filter. Vortex is not suitable for environments that contain gaseous particles or have an oxygen deficiency. It is the purchasers' responsibility to ensure their workplace is tested adequately for fume hazards and adequate extraction is used in confined space applications.



Distributed by:

Issue date: May 2023

**0800 WELDWELL
WELDWELL.CO.NZ**

**WELDWELL
NEW ZEALAND**



WIA

